



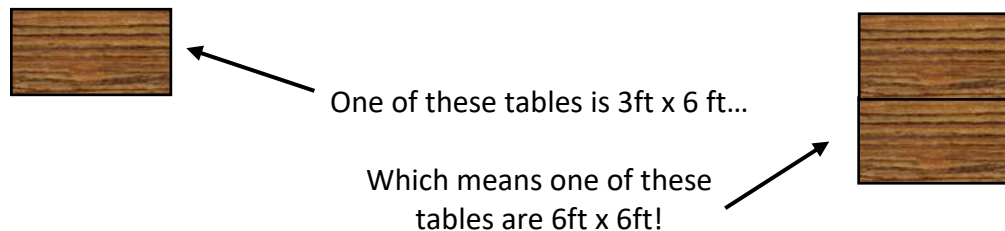
# TABLE PLANS COW SHED

---

We have created this document so that you can start to have a little think about how you would like the tables to be positioned in our Cow Shed.

You can have banquet style tables, squares, or a mixture of both. You are welcome to have your top table in the middle with a backdrop of the fireplace, at the far end with a backdrop of the large window, or don't have one at all!

If you have some other ideas and you would like us to measure up to make sure it will work, just let us know.

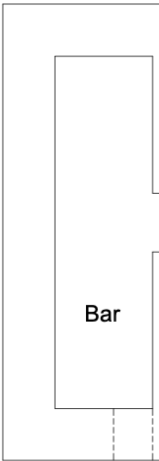


86 SEATS

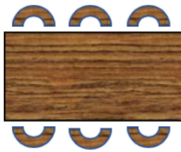


The 2 of you on the end with up to 12 other people on your top table

Glazed Screen

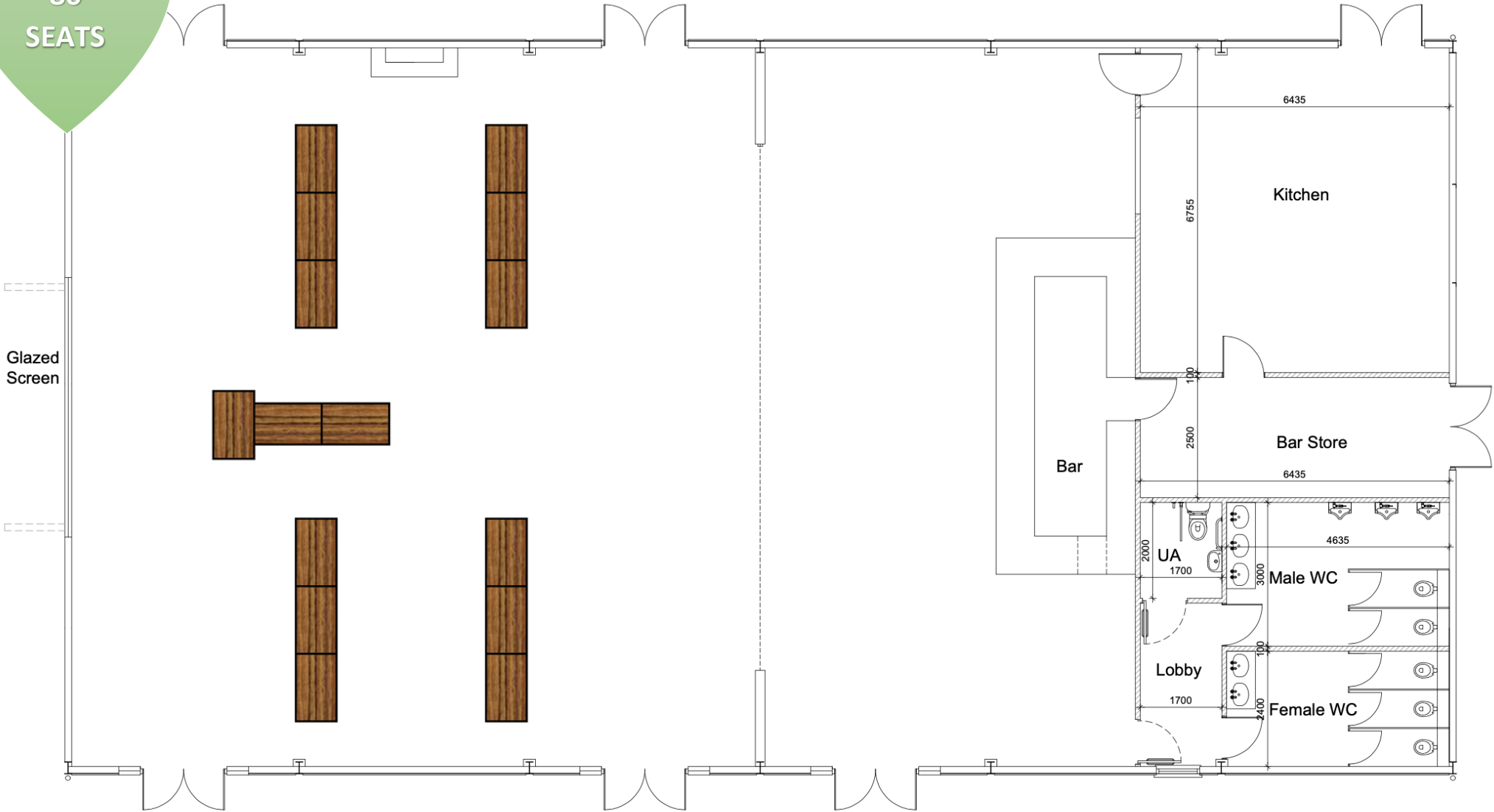


Bar



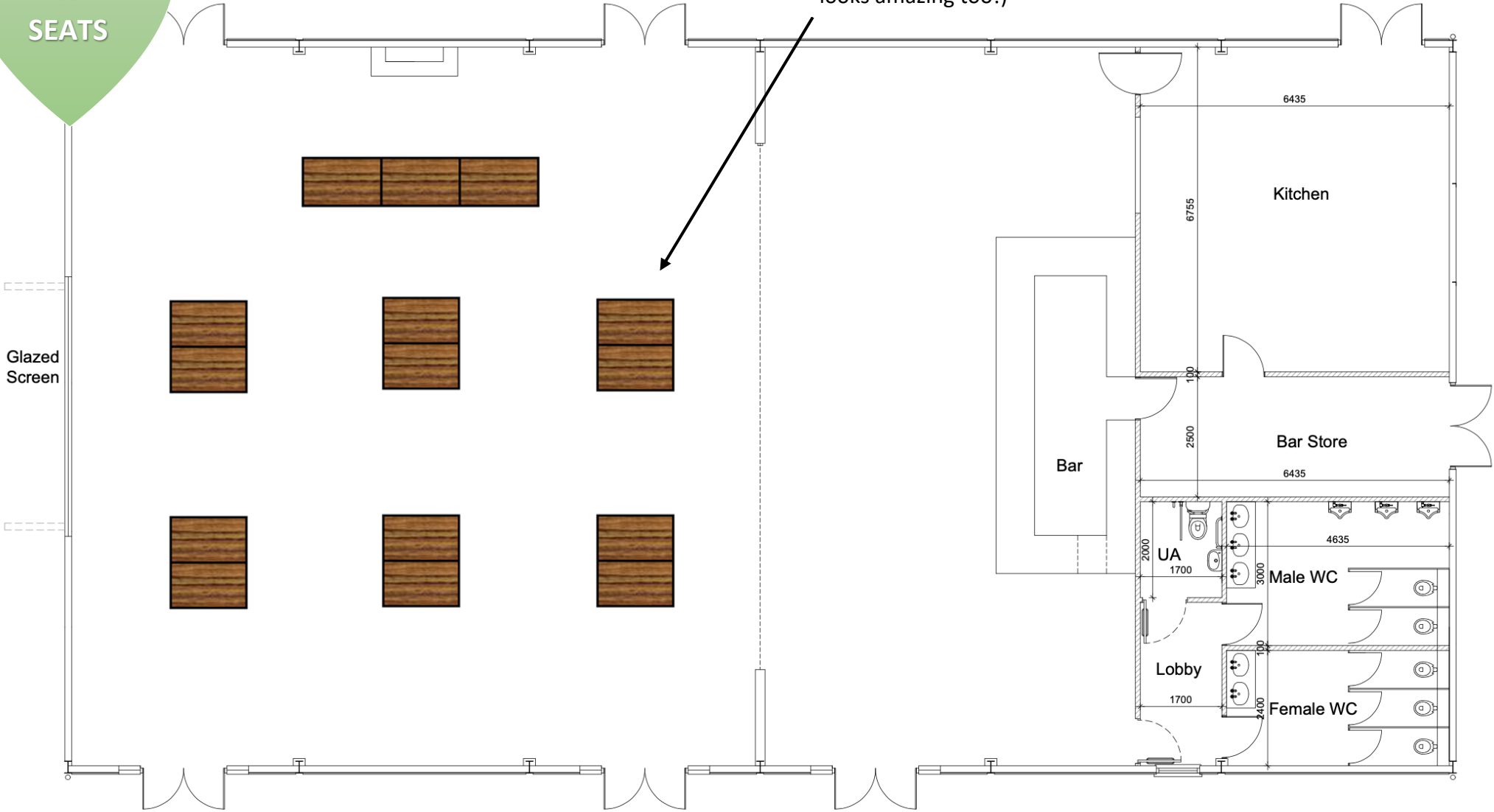
Maximum of 3 people per side of the table!

86 SEATS



69 SEATS

We can fit a maximum of 10 per square (but we think 8 per square looks amazing too!)



Glazed Screen

Bar

Kitchen

Bar Store

Lobby

Male WC

Female WC

UA

6435

6755

2500

2000

1700

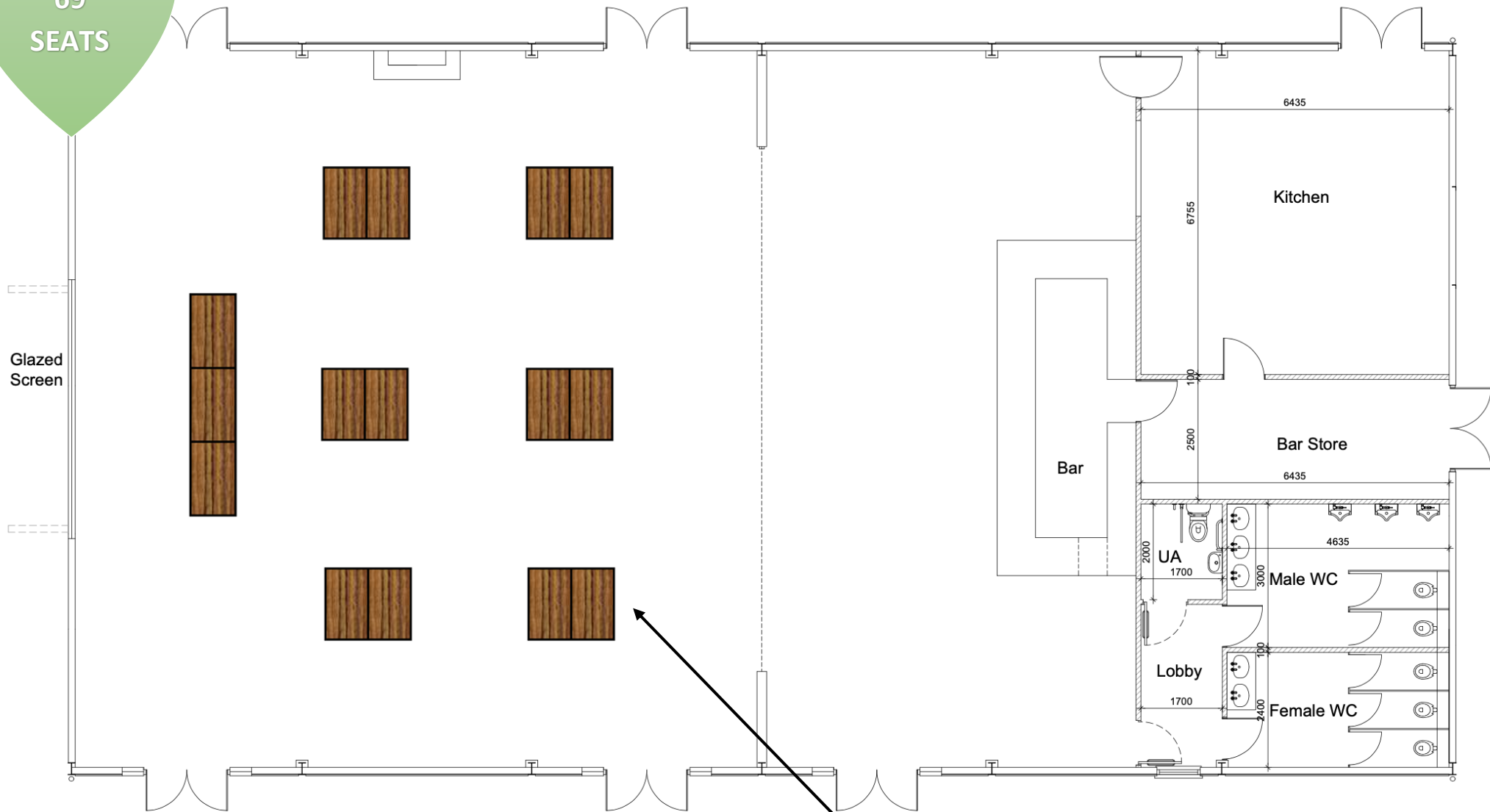
3000

1700

2400

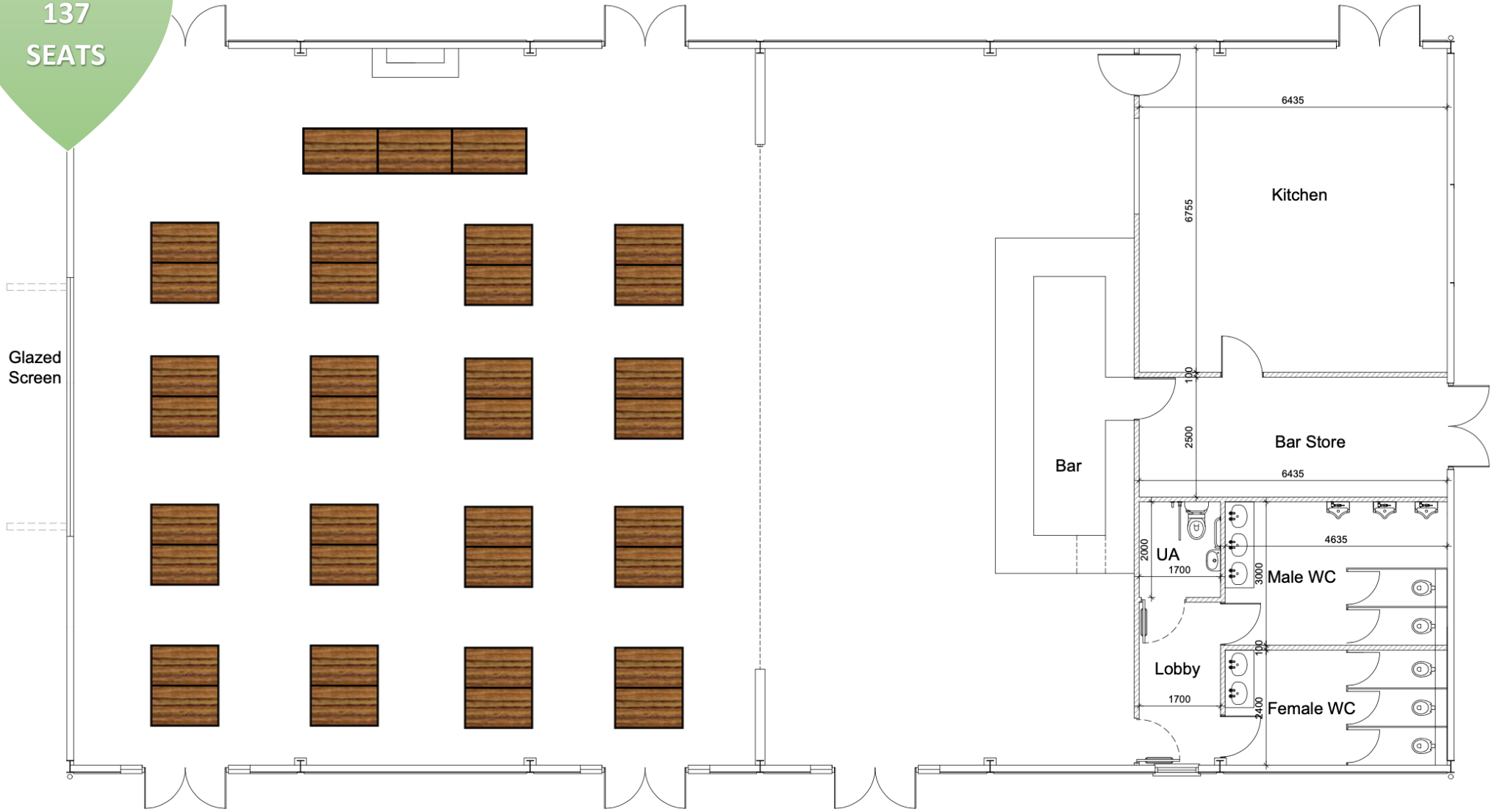
4635

69 SEATS



If you have more than 69 guests, we can keep adding more squares!

137 SEATS



Glazed Screen

Kitchen

Bar

Bar Store

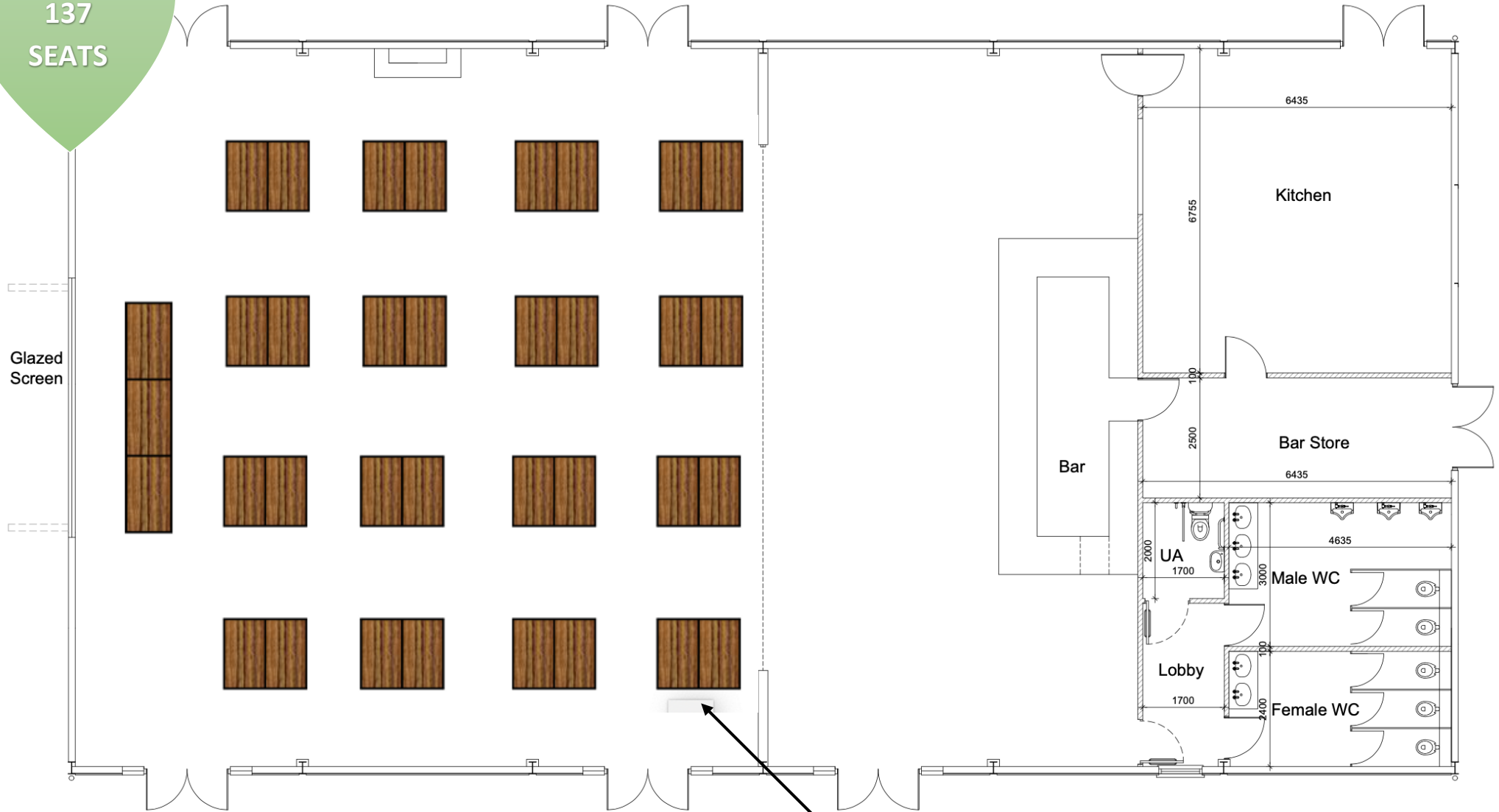
UA

Male WC

Lobby

Female WC

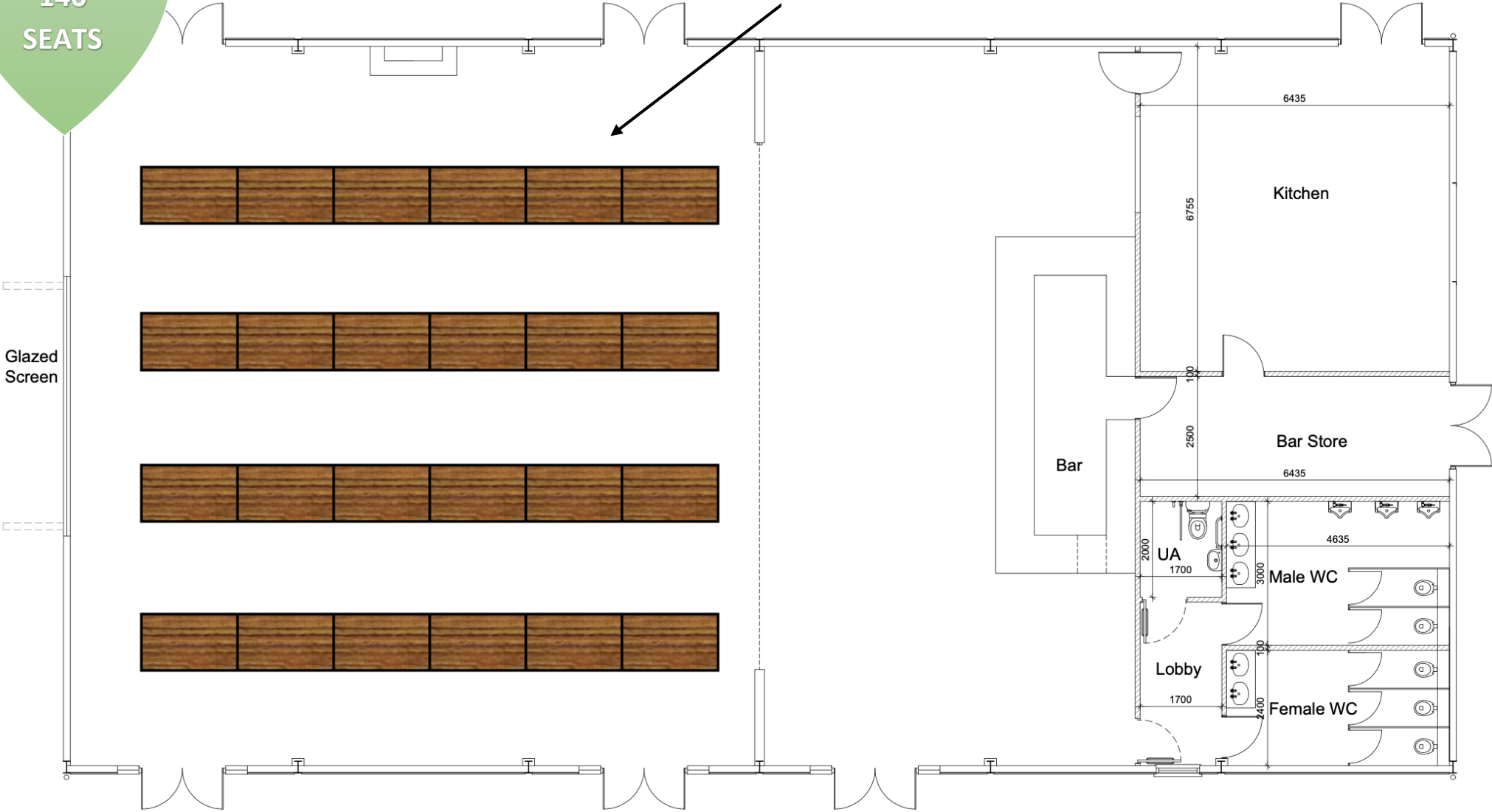
137 SEATS



We can fit a maximum of 4 squares in a row

140 SEATS

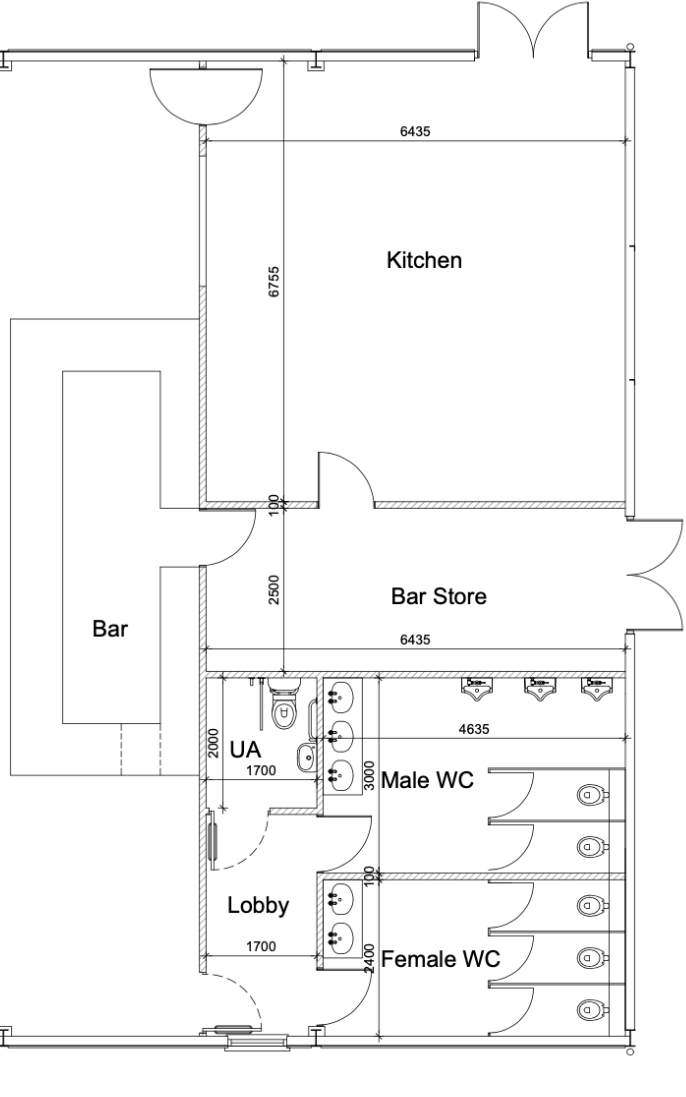
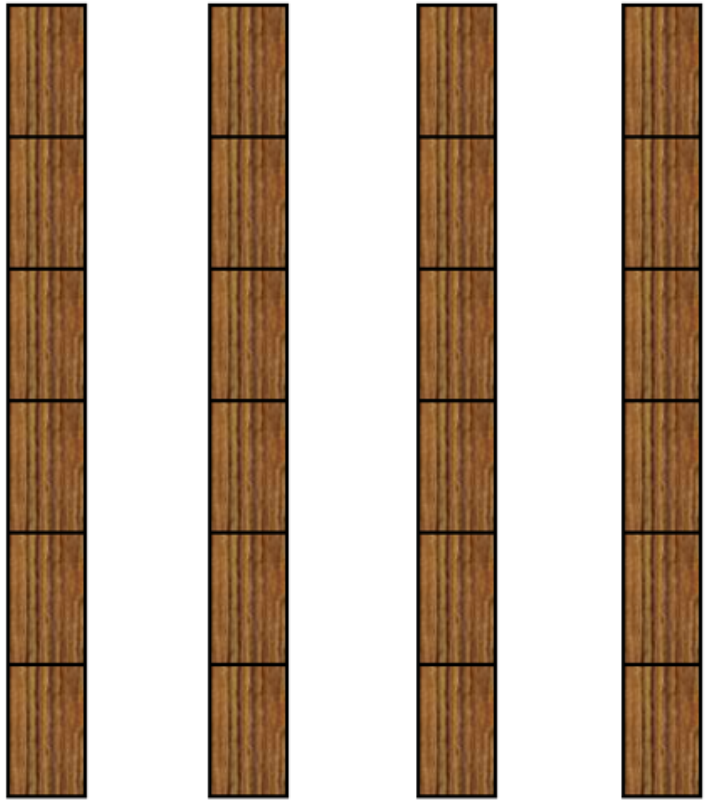
We can fit a maximum of 6 tables in a row





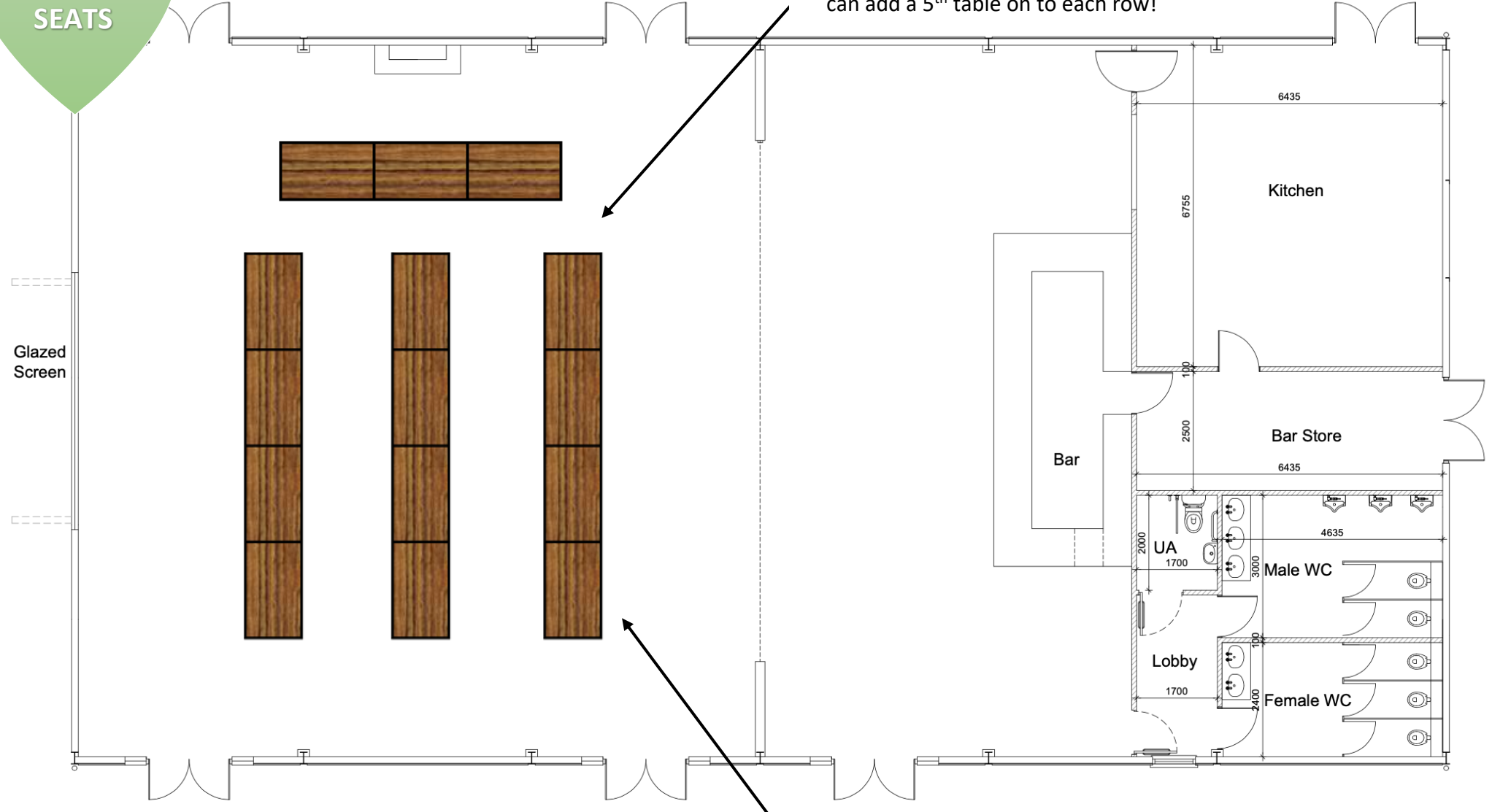
140 SEATS

Glazed Screen



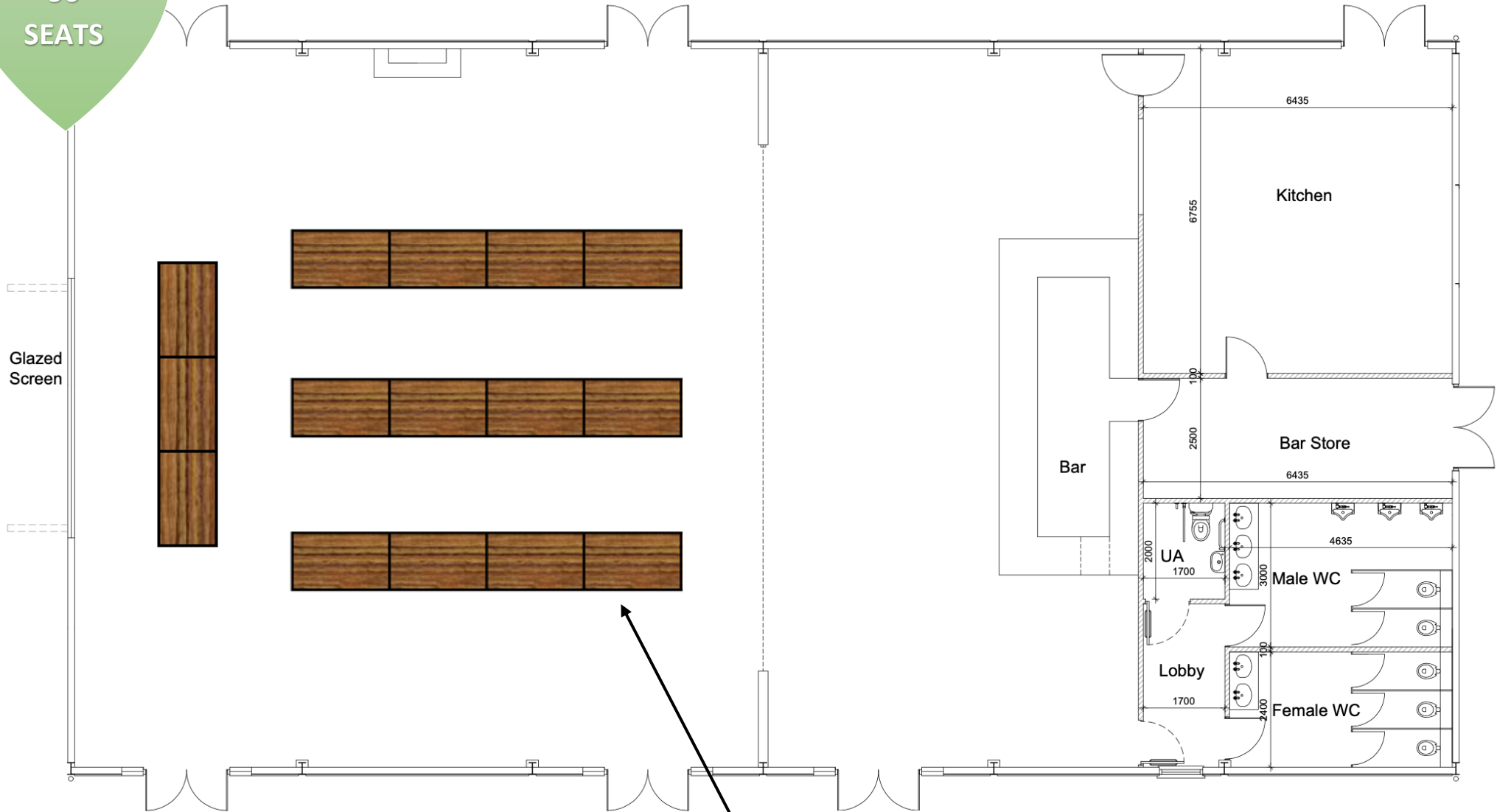
90 SEATS

If you like this layout but have more than 90 guests, we can fit an extra row of tables for your guests (4 max) or we can add a 5<sup>th</sup> table on to each row!



This plan also makes for a nice 'U Shape' table layout if you wanted to have the top table attached to the guest banquet tables!

90 SEATS



If you have less than 90 guests, we can drop a row off, or even take each row down to 3 tables.